

**Legend**

- Existing residences
- Potential development areas
- Areas with constraints due to watercourses, low areas, slopes exceeding 10%
- Areas subject to corridor overlay District (see Land Use Bylaw)
- Potential development areas with access constraints
- ASP Policy Boundary
- Strathmore Town Boundary

**Future Land Use Concept  
Map A**

- Conceptual arterial road options
- First phase intersection closure
- Second phase access
- Potential interchange location (subject to confirmation by Alberta Transportation)

West Highway 1 Area Structure Plan  
Wheatland County  
All in Twp24 - W4M

**MATRIX PLANNING**

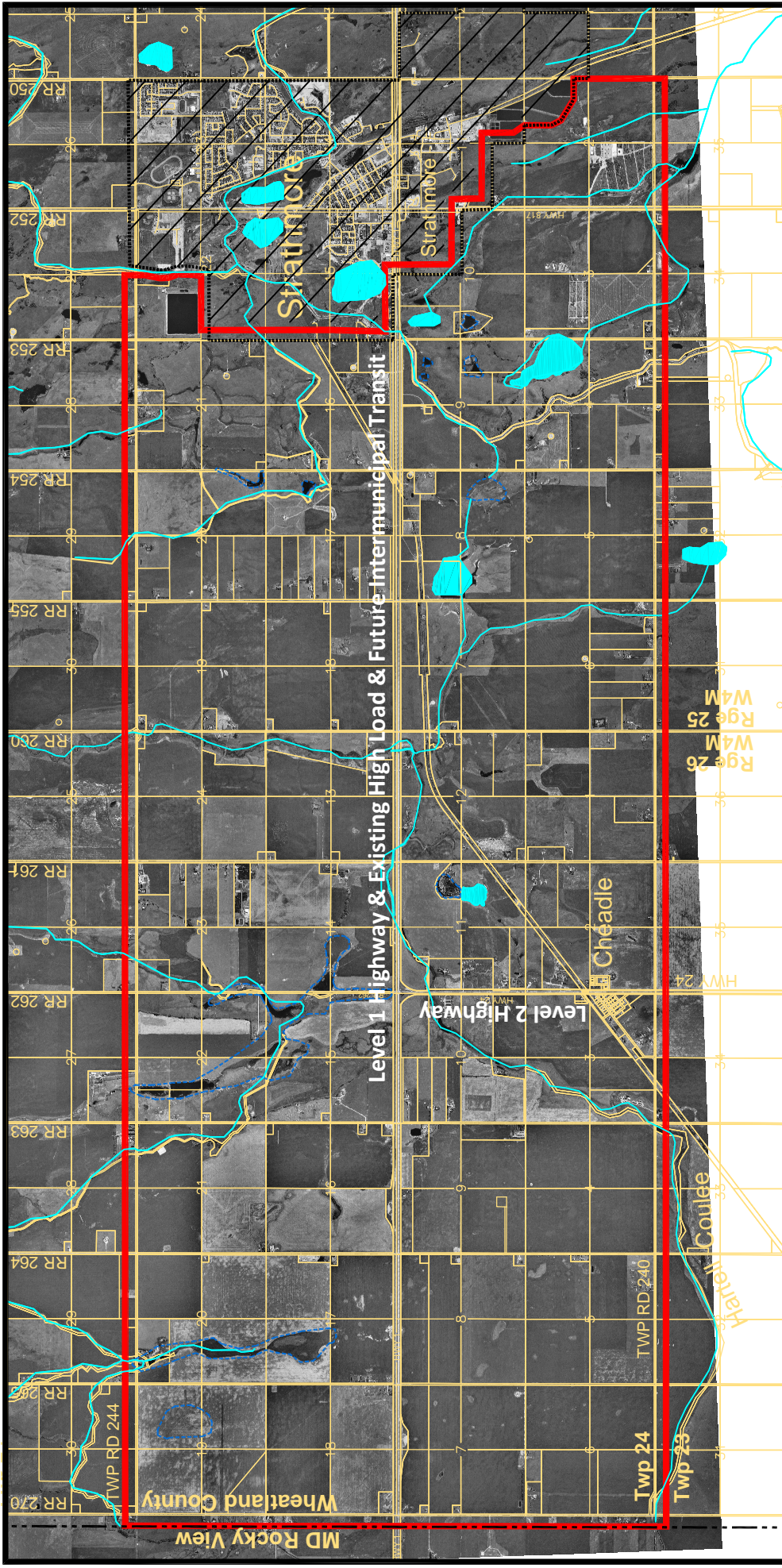
Scale: 1 : 40 000

0 500 1 000





File No.: WWASP Base Dec 05.dwg

# Background Maps





**Legend**

-  Low Areas
-  Preliminary ASP Study Area Boundary
-  Strathmore Town Boundary
-  Wheatland County Boundary

**Air Photo  
Map # 1**

**West Highway 1 Area Structure Plan**  
 Wheatland County  
 All in Twp24 - W4M

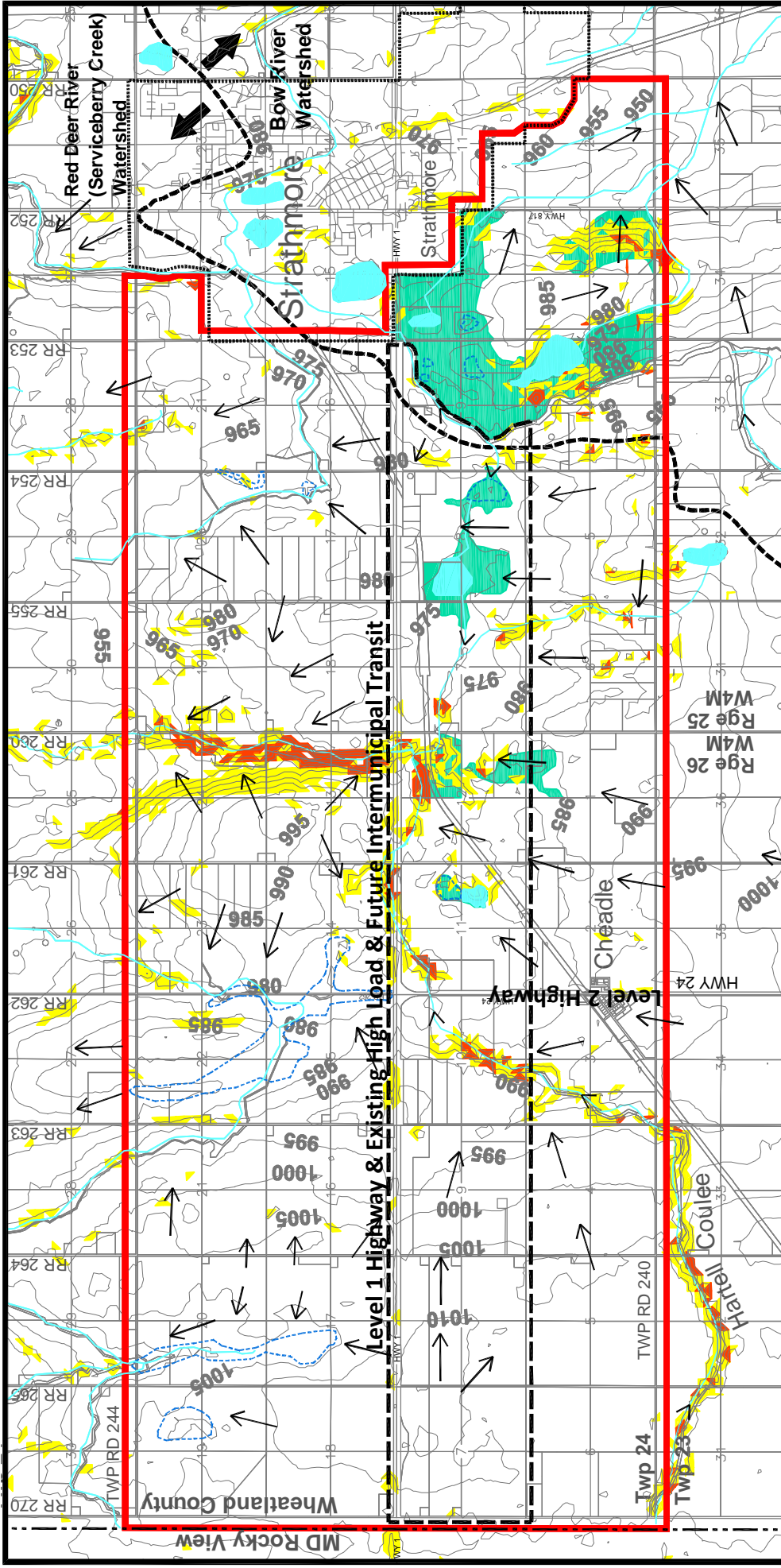


**MATRIX PLANNING**

Scale: 1 : 75 000







**Legend**

**Contour**

5m Interval

**Slope**

- <5%
- 5-10%
- >10%

General Drainage Flow  
Low Areas

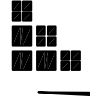
- Preliminary ASP Study Area Boundary
- Strathmore Town Boundary
- Wheatland County Boundary



Poor Drainage or Topography  
south of highway 1

**Topography / Drainage  
Map # 2**

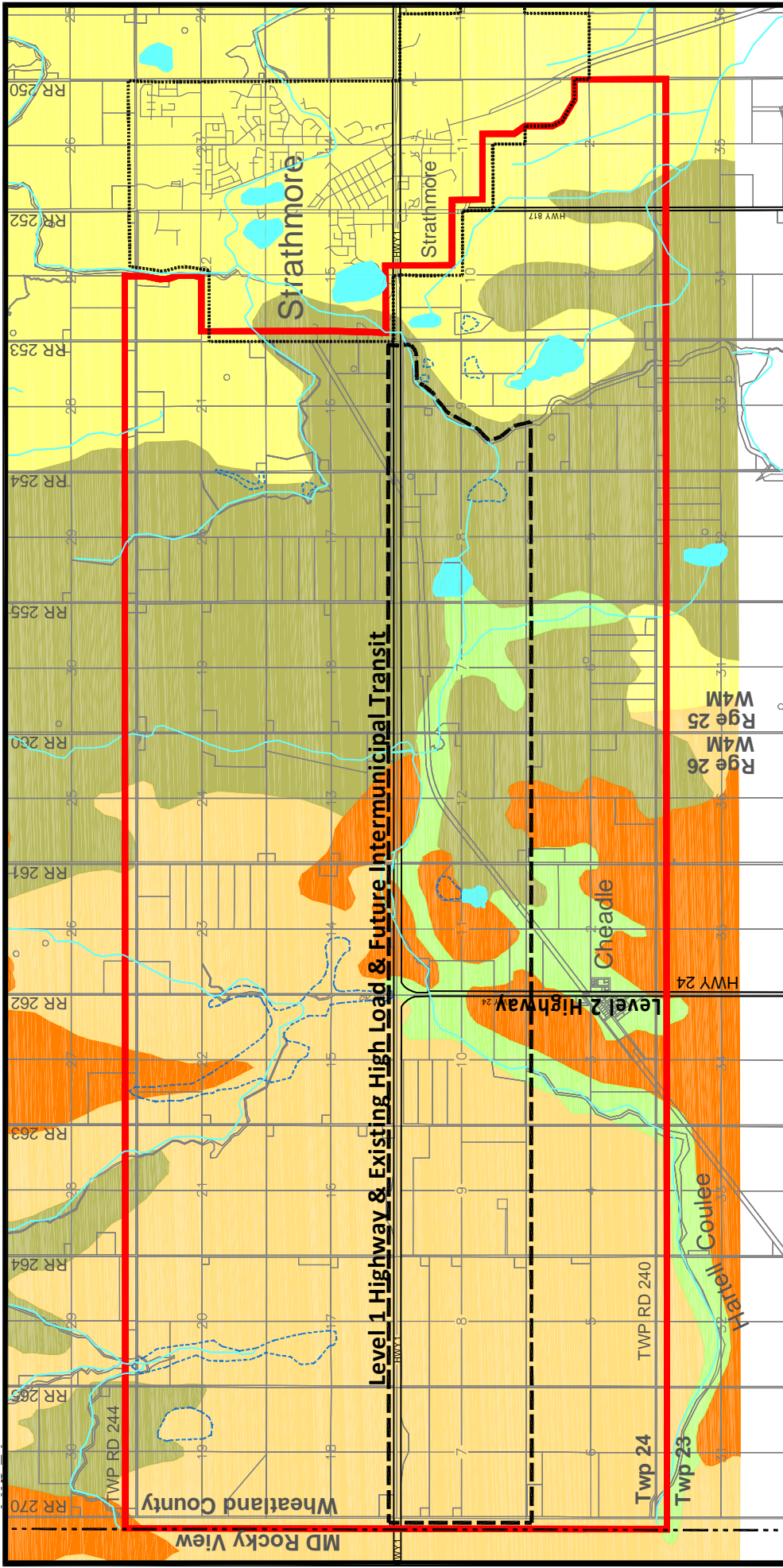
**West Highway 1 Area Structure Plan**  
Wheatland County  
All in Twp24 - W4M



**MATRIX PLANNING**

Scale: 1 : 75 000  
0 1 000 2 000





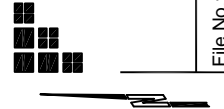
**Legend**

- CLI Class 1
- CLI Class 2
- CLI Class 3
- CLI Class 4
- CLI Class 5

- Low Area
- Preliminary ASP Study Area Boundary
- Strathmore Town Boundary
- Wheatland County Boundary

**Canadian Land Inventory  
Map # 3**

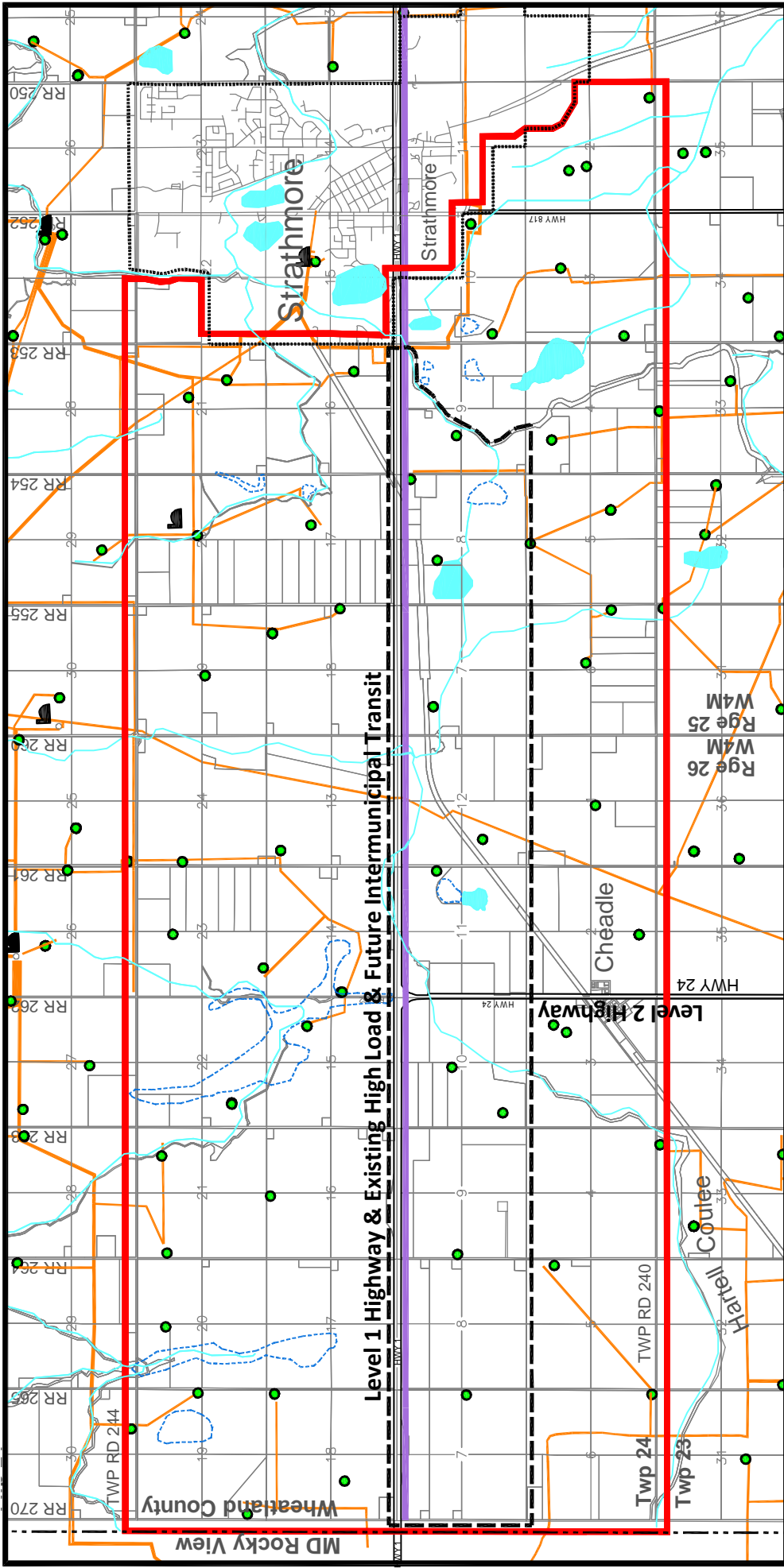
**West Highway 1 Area Structure Plan**  
Wheatland County  
All in Twp24 - W4M



**MATRIX PLANNING**

Scale: 1 : 75 000





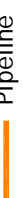

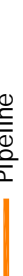

0 1 000 2 000



**Existing Oil/Gas/Electrical Infrastructure**  
 West Highway 1 Area Structure Plan  
 Wheatland County  
 All in Twp24 - W4M


**Map # 4**

**Legend**

-  Oil/Gas Well
-  Pipeline
-  Facility
-  138 Kv Transmission Line
-  Low Area
-  Preliminary ASP Study Area Boundary
-  Strathmore Town Boundary
-  Wheatland County Boundary

**MATRIX PLANNING**

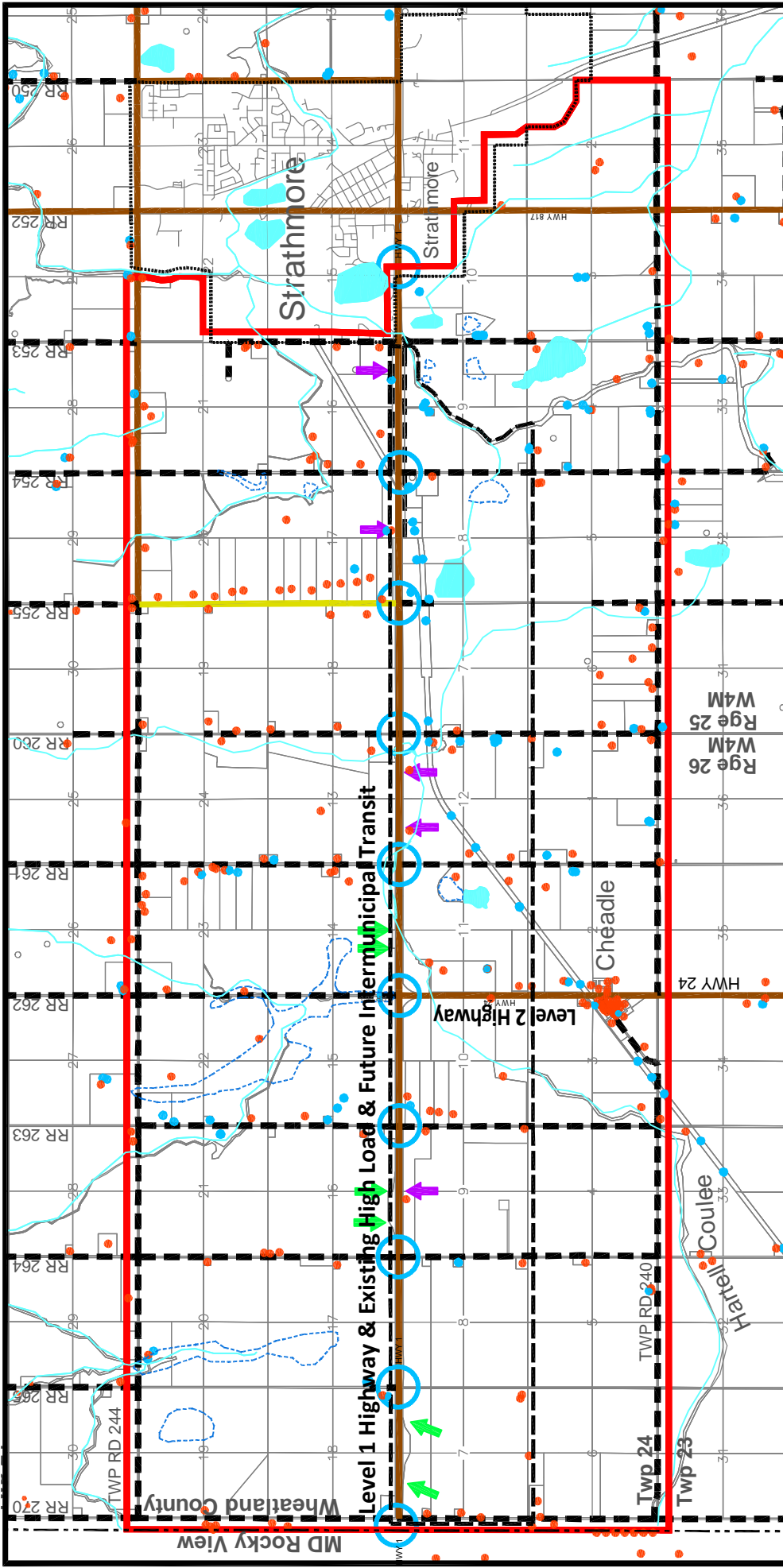
Scale: 1 : 75 000



File No.: WWASP Base Nov 29 05.dwg

Source: Wheatland County





**West Highway 1 Area Structure Plan**  
 Wheatland County  
 All in Twp24 - W4M

**Existing Road System**  
 Map # 5

**Legend**

- Primary and Secondary Highway Paved
- Chip-Sealed / Oil
- Gravel
- Undeveloped Road Allowance
- Low Area
- Residences
- Manufactured Homes / Cabins
- Preliminary ASP Study Area Boundary
- Strathmore Town Boundary
- Wheatland County Boundary

All Turns Intersection

Right In / Right Out (Hwy 1)

Access One Side (Hwy 1)

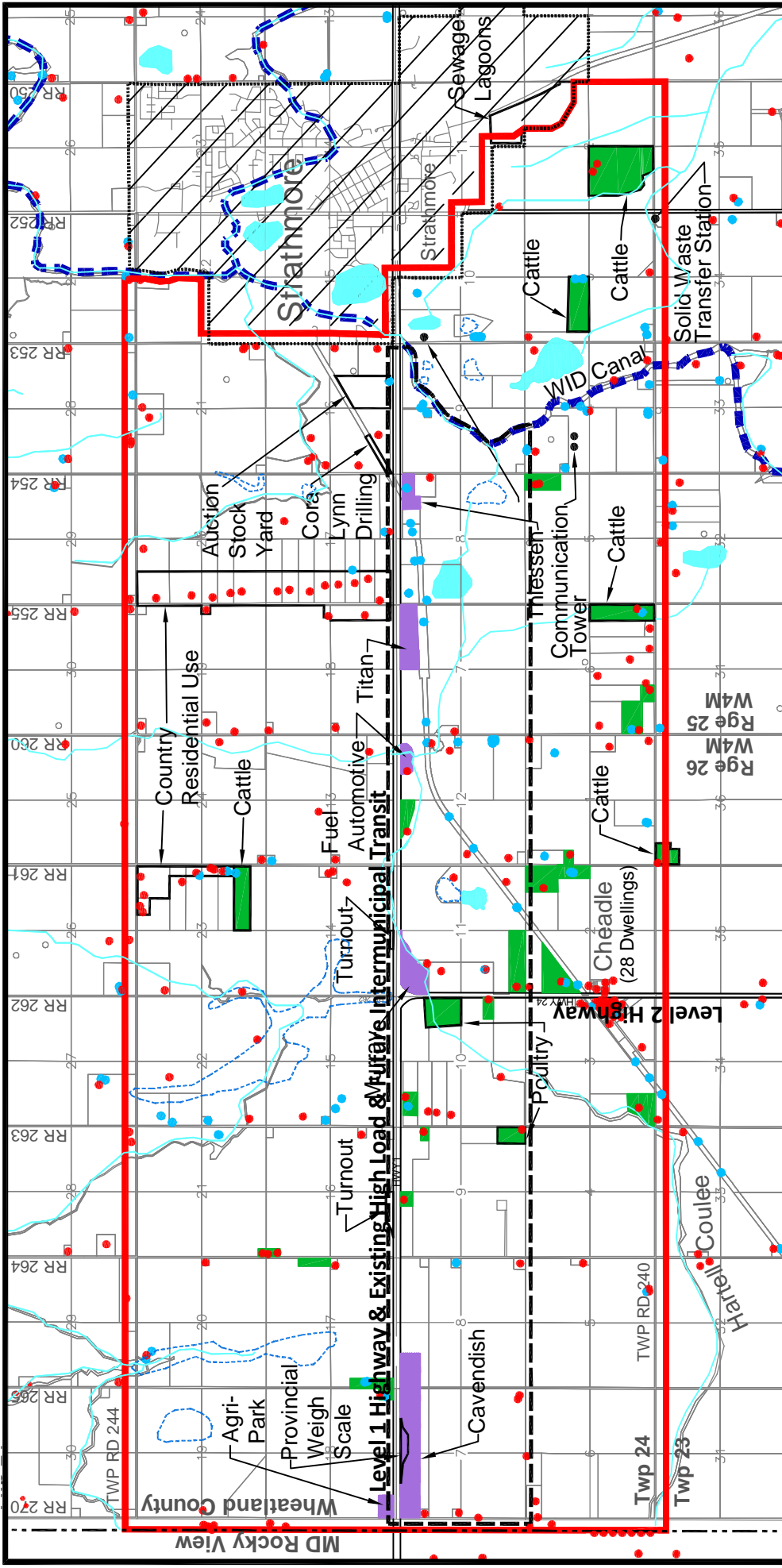
**MATRIX PLANNING**

Scale: 1 : 75 000

0 1 000 2 000

File No.: WWASP Base Nov 29 05.dwg

Source: Wheatland County



**Legend**

- Farming Operations
- Proposed Industrial Use
- Specified Use
- Low Area
- Residences
- Manufactured Homes / Cabins
- Preliminary ASP Study Area Boundary
- Strathmore Town Boundary
- Wheatland County Boundary

**Existing Land Use  
Map # 6**

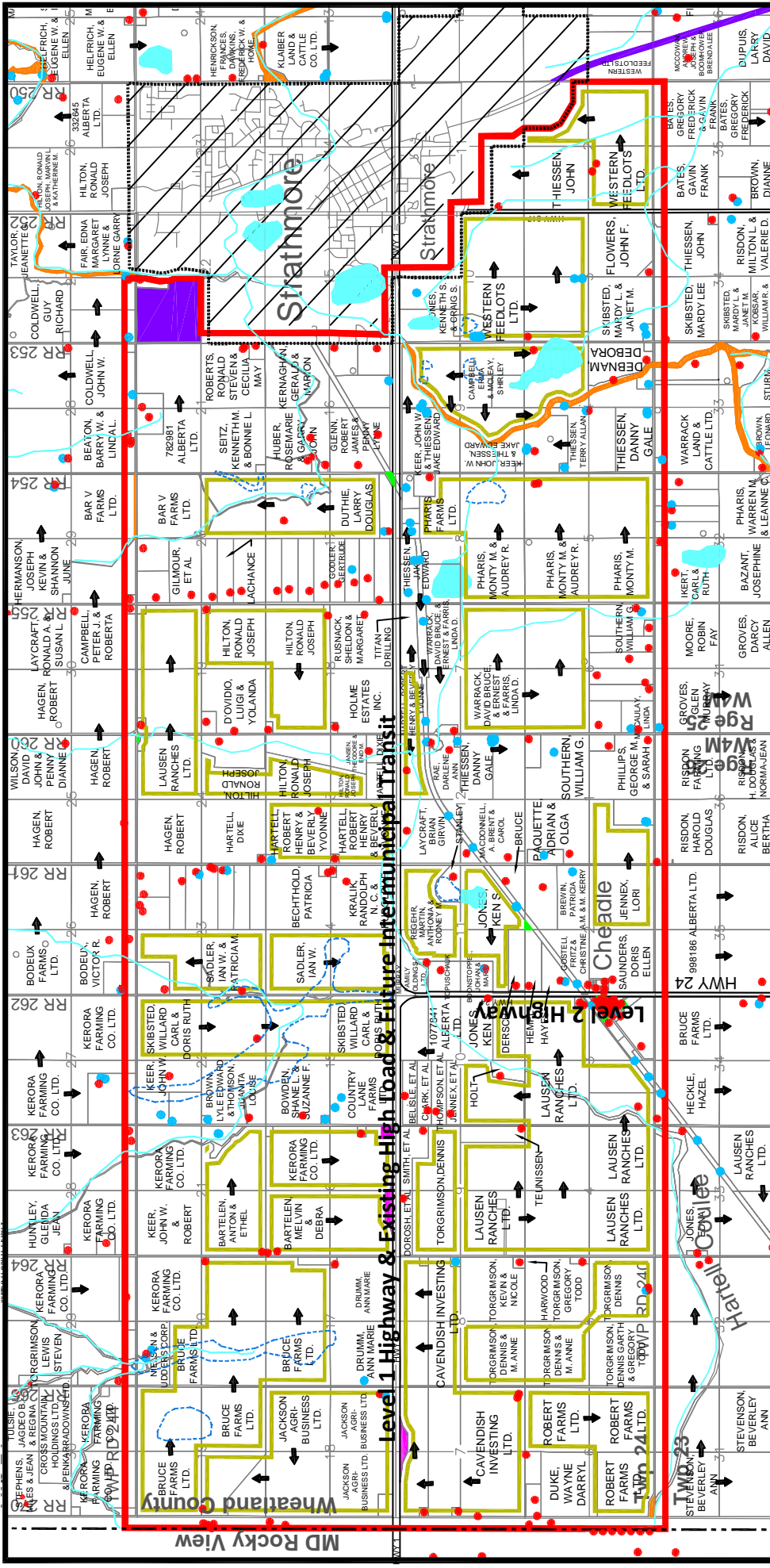
West Highway 1 Area Structure Plan  
Wheatland County  
All in Twp24 - W4M

**MATRIX PLANNING**

Scale: 1 : 75 000

0 1 000 2 000





**West Highway 1 Area Structure Plan**  
 Wheatland County  
 All in Twp24 - W4M

**Land Ownership**  
 Map # 7

**Legend**

- County Owned Parcels
- Town Owned Parcels
- Crown Land
- Western Irrigation District Owned Parcels
- Landowner blocks
- Residences
- Manufactured Homes / Cabins
- Low Areas
- Preliminary ASP Study Area Boundary
- Strathmore Town Boundary
- Wheatland County Boundary

**MATRIX PLANNING**

Scale: 1 : 75 000

0 1 000 2 000

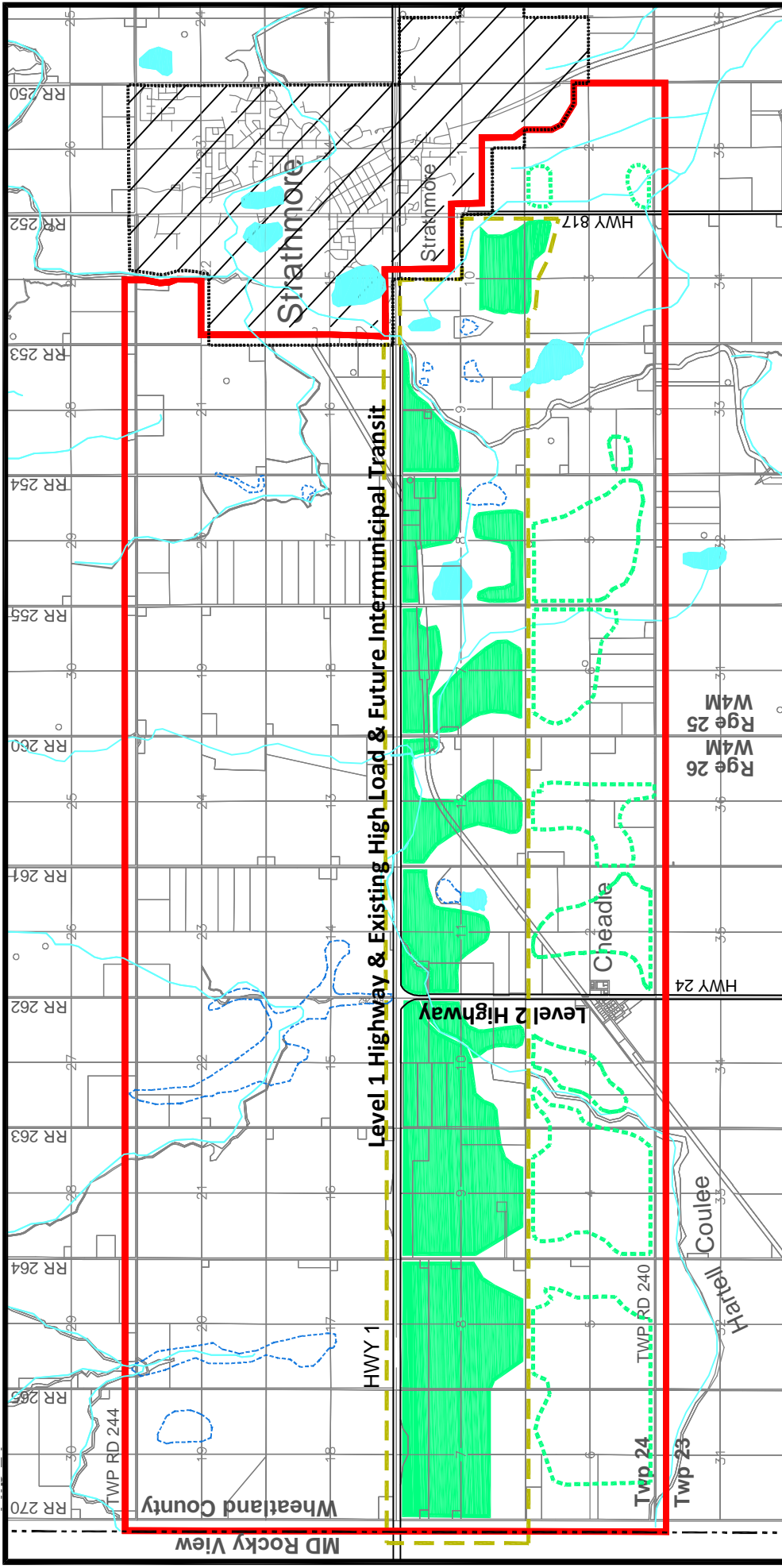
File No.: WWASP Base Nov 29 05.dwg

Source: Wheatland County









Potential Land Development Capability  
 West Highway 1 Area Structure Plan  
 Wheatland County  
 All in Twp24 - W4M

Potential Land Development Capability  
 Map #10

- Legend**
- Higher Development Capability ①
  - Development Capability Outside the Primary Development Area ①
  - Primary Development Area
  - ASP Primary Development Area
  - Preliminary ASP Study Area Boundary
  - Strathmore Town Boundary
  - Wheatland County Boundary

**MATRIX PLANNING**

Scale: 1 : 75 000

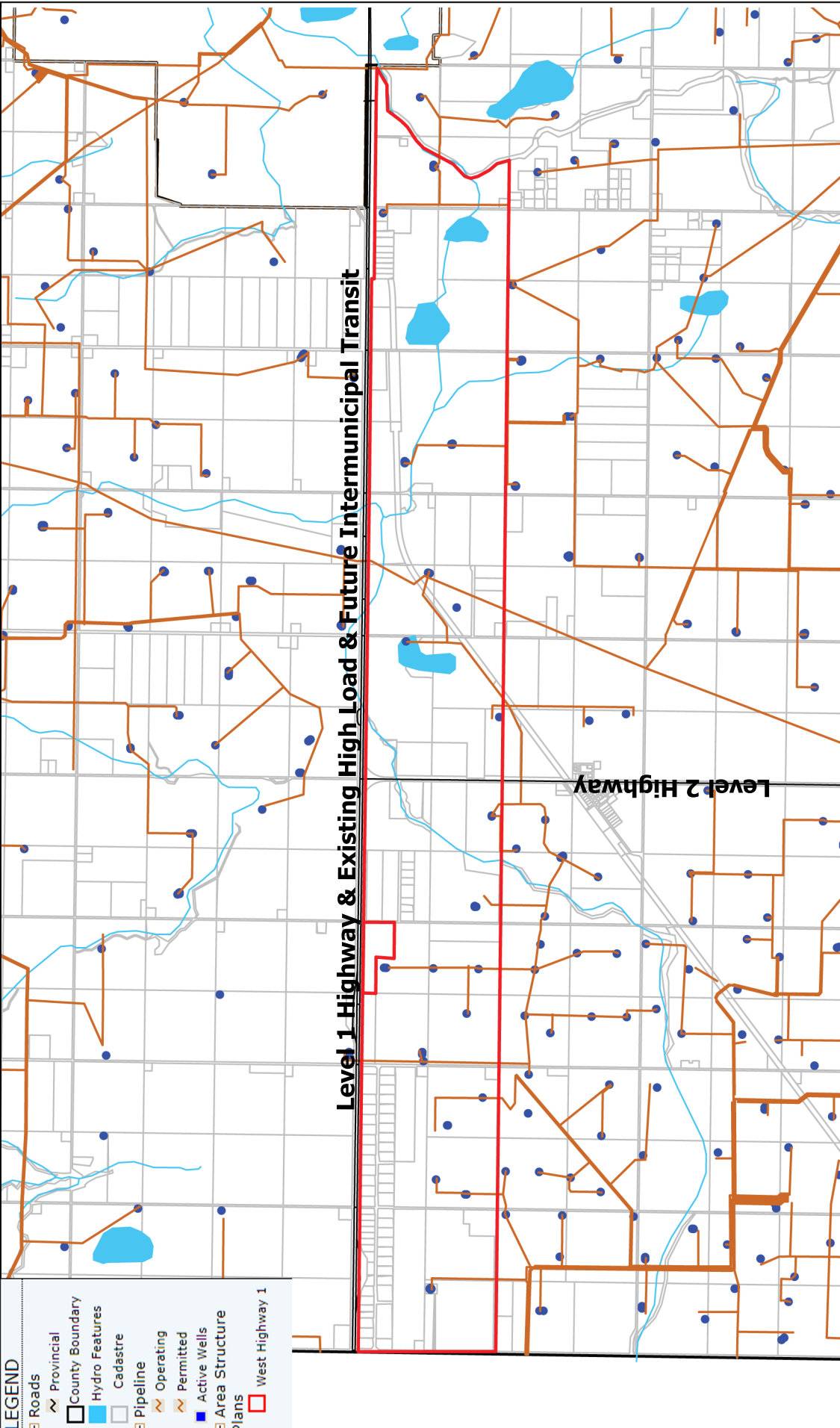
0 1 000 2 000

File No.: WWASP Base Nov 29 05.dwg

① Base on topography, drainage, highway proximity. 400m buffer from dwellings that are located 800m or more from highway 1

Source: Wheatland County





**LEGEND**

|  |                      |
|--|----------------------|
|  | Roads                |
|  | Provincial           |
|  | County Boundary      |
|  | Hydro Features       |
|  | Cadastre             |
|  | Pipeline             |
|  | Operating            |
|  | Permitted            |
|  | Active Wells         |
|  | Area Structure Plans |
|  | West Highway 1       |

1 Mi  
1 Km

Current Scale 1: 64526

# Supplemental Map (Oil and Gas Pipelines)



**WHEATLAND COUNTY**  
Where There's Room to Grow

Wheatland County makes no representation or warranties regarding the information contained in this document, including without limitation, whether said information is accurate or complete. Persons using this document do so solely at their own risk, and Wheatland County shall have no liability to such person for any loss or damage whatsoever. This document shall not be copied or distributed to any person without the express written consent of Wheatland County. Copyright Wheatland County. All Rights Reserved.